

DESCRIPTION:

Single Disc Non-Slam Check Valves for general purpose applications. These valves are lighter and more compact than conventional swing check valves. The self-centering design facilitates easy installation between a wide variety of flange types.

FEATURES:

- Can be mounted in any plane/ direction
- Operate under extremely low opening pressures
- Tested to API 598

SIZES : DN15 ~ 100

PRESSURE RATING: #300

SUITABILITY: For flanges as per ANSI #150/300

Non IBR¹ / IBR

INSTALLATION: Between two pipe flanges using standard gasket on either side.

MATERIAL:

No.	PART	MATERIAL	QTY. (Nos)
1.	BODY	ASTM A351 Gr. CF8M	01
2.	DISC	AISI 316	01
3.	SPRING	AISI 316	01
4.	SPRING HOLDER	AISI 316	01

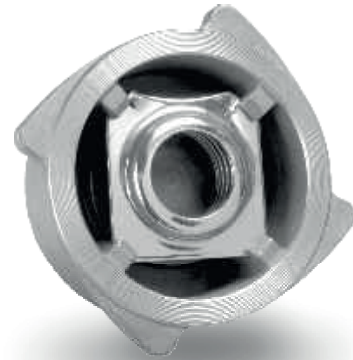
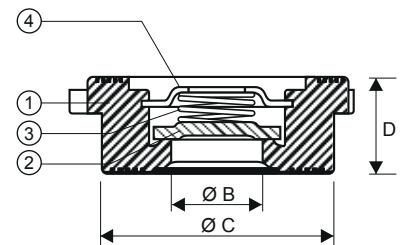
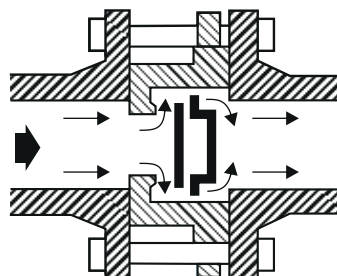
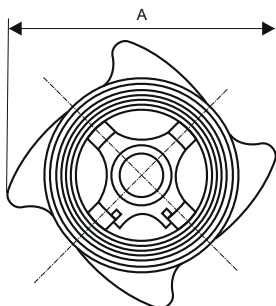
SEATING

- Standard : Metal seated
Optional : EPDM / Nitrile / Silicon / Viton

ORDERING INFORMATION:

Flow medium, working pressure / temperature, seat material.

¹Indian Boiler Regulations



DIMENSIONS - Nominal in mm

SIZE	A	B	C	D	Wt.
DN15	60	15	38	17	0.15 kg
DN20	70	20	47	20	0.20 kg
DN25	81	25	55	23	0.30 kg
DN32	90	32	68	28	0.58 kg
DN40	101	40	76	32	0.70 kg
DN50	115	50	93	40	1.15 kg
DN65	142	65	109	46	1.70 kg
DN80	154	80	128	50	2.20 kg
DN100	184	100	148	60	3.10 kg

CAUTION:

METAL SEATING NOT SUITABLE FOR HAZARDOUS / POISONOUS MEDIA

Local regulations may restrict the use of this product below the conditions quoted. Limiting conditions refer to standard connections only. In the interest of development and improvement of the product, we reserve the right to change the specifications without prior notice.