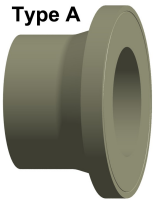
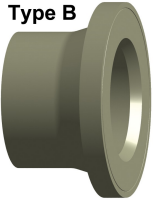


Type A



Type B



Type C



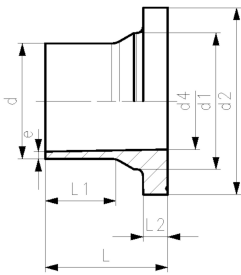
PROGEF Standard flange adaptor S5/SDR11 (PN10) ANSI
Combined jointing face: flat and serrated

Model:

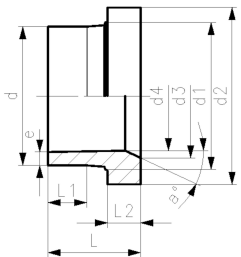
- Material: PP-H
- Conventional butt-welding according to DVS 2207
- IR- Infrared welding compatible
- Suitable for flange connections to **ANSI/ASME B 16.5**
- Up to d315, suitable for butterfly valve type 567/578 and 038/039. Above use PROGEF Standard adaptor for butterfly valves SDR11 (d355-d500)
- Gasket: profile flange gasket EPDM No. 48 44 07, FKM No. 49 44 07
- * Material: PP-R, not suitable for butterfly valves

d (mm)	DN (mm)	FM	Code	Weight (kg)
20	15	IR	727 798 706	0.015
25	20	IR	727 798 757	0.022
32	25	IR	727 798 758	0.039
40	32	IR	727 798 759	0.056
50	40	IR	727 798 760	0.087
63	50	IR	727 798 711	0.144
75	65	IR	727 798 712	0.243
90	80	IR	727 798 763	0.310
110	100	IR	727 798 714	0.441
125	100	IR	727 798 715	0.520
140	125	IR	727 798 716	0.800
160	150	IR	727 798 317	0.927
180	150	IR	727 798 318	1.026
200	200	IR	727 798 319	1.652
225	200	IR	727 798 320	1.665
250	250	IR	727 798 321	2.630
280	250	IR	727 798 322	2.521
315	300	IR	727 798 323	3.247
*	355	350	727 798 324	6.600
*	400	400	727 798 325	9.100
*	450	500	727 798 326	17.300
*	500	500	727 798 327	18.400

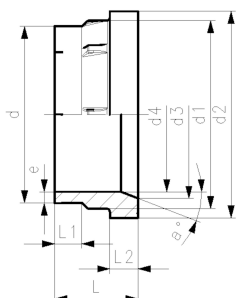
Type A



Type B



Type C



d1 (mm)	d2 (mm)	d3 (mm)	d4 (mm)	L (mm)	L1 (mm)	L2 (mm)	e (mm)	Type	a°
26	45		16	50	29	7	1.9	A	
33	54		20	52	27	9	2.3	A	
40	63		26	54	28	10	3.0	A	
50	73		32	55	25	11	3.7	A	
61	82		40	62	32	12	4.6	A	
75	102		51	68	38	14	5.8	A	
89	122	66	61	80	43	16	6.8	B	30
105	133	78	70	80	42	17	8.2	B	30
125	158	100	90	80	40	18	10.0	B	30
132	158	114	102	82	35	25	11.4	B	25
155	188	127	114	89	39	25	12.8	B	27
175	212	151	127	92	40	25	14.6	C	30
180	212	154	148	92	40	30	17.4	B	30
232	268	203	174	100	35	32	19.3	C	30
235	268	210	196	100	35	32	21.7	C	30
285	320	252	203	120	45	35	24.0	C	25
291	320	265	228	120	45	37	26.8	C	30
335	370	300	256	150	50	50	30.2	C	22
*	373	430	342	162	70	40	33.9	C	45
*	427	482	387	172	70	46	38.2	C	45
*	514	585	400	225	105	60	43.0	C	15
*	530	585	442	231	105	60	47.8	C	15

Data sheet

valid from: 7/16/19



The technical data are not binding. They neither constitute expressly warranted characteristics nor guaranteed properties nor a guaranteed durability. They are subject to modification. Our General Terms of Sale apply.

Georg Fischer Piping Systems Ltd, Postfach, CH-8201 Schaffhausen/Switzerland

Phone +41 -(0)52-631 1111

e-mail: info.ps@georgfischer.com

Internet: <http://www.gfps.com>