



Backing flange PP-V metric For butt fusion systems metric

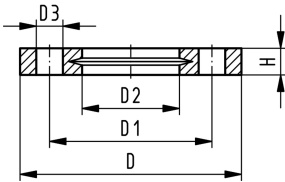
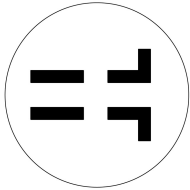
Model:

- Full-plastic flange PP-GF (30 % glass-fibre reinforced)
- Connecting dimension: ISO 7005, EN 1092, BS 4504, DIN 2501
- **Bolt circle PN 10**

AL: number of holes

¹⁾ Suitable for socket- and butt fusion systems

²⁾ Combined version, metric-ANSI



	d	DN	PN	Code	SP	Weight	D	D1	D2	D3	H	AL	SC
	(mm)	(mm)	(bar)			(kg)	(mm)	(mm)	(mm)	(mm)	(mm)		
1	20	15	16	727 700 406	56	0.093	95	65	28	14	16	4	M12
1	25	20	16	727 700 407	38	0.120	105	75	34	14	17	4	M12
1	32	25	16	727 700 408	80	0.151	115	85	42	14	18	4	M12
1	40	32	16	727 700 409	40	0.244	140	100	51	18	20	4	M16
1	50	40	16	727 700 410	30	0.297	150	110	62	18	22	4	M16
1	63	50	16	727 700 411	25	0.362	165	125	78	18	24	4	M16
1	75	65	16	727 700 412	19	0.487	185	145	92	18	26	4	M16
	90	80	16	727 700 513	15	0.544	200	160	108	18	27	8	M16
	110	100	16	727 700 514	13	0.643	220	180	128	18	28	8	M16
	125	100	16	727 700 515	13	0.635	220	180	135	18	28	8	M16
	140	125	16	727 700 516	10	0.842	250	210	158	18	30	8	M16
2	160	150	16	727 700 517	0	1.200	285	240	178	22	32	8	M20
	180	150	16	727 700 518	0	1.200	285	240	188	22	32	8	M20
2	200	200	16	727 700 519	0	1.400	340	295	235	22	34	8	M20
2	225	200	16	727 700 520	0	1.400	340	295	238	22	34	8	M20
	250	250	16	727 700 521	0	2.052	395	350	288	22	38	12	M20
	280	250	16	727 700 522	0	1.700	395	350	294	22	38	12	M20
	315	300	16	727 700 523	0	2.400	445	400	338	22	42	12	M20
	355	350	10	727 700 524	0	4.440	515	460	376	22	46	16	M20
	400	400	10	727 700 525	0	5.624	574	515	430	26	50	16	M24

The technical data are not binding. They neither constitute expressly warranted characteristics nor guaranteed properties nor a guaranteed durability. They are subject to modification. Our General Terms of Sale apply.

Georg Fischer Piping Systems Ltd, Postfach, CH-8201 Schaffhausen/Switzerland

Phone +41 -(0)52-631 1111

e-mail: info.ps@georgfischer.com

Internet: <http://www.gfps.com>