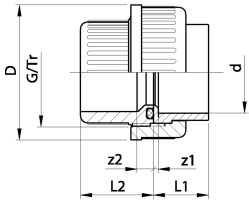
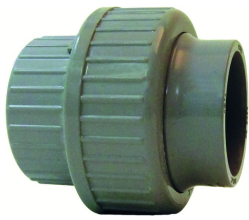


# Data sheet

valid from: 6/29/17



## Union PVC-C metric

### Model:

- Union End: PVC-C solvent cement socket metric
- Union bush: PVC-C solvent cement socket metric
- Gasket: O-ring EPDM code no. 748 410 005-016, for d90 748 410 248
- Gasket: O-ring FKM code no. 749 410 005 -016, for d90: 749 410 248

| d<br>(mm) | PN<br>(bar) | EPDM<br>Code       | SP | Weight<br>(kg) | FKM<br>Code        | SP | Weight<br>(kg) |
|-----------|-------------|--------------------|----|----------------|--------------------|----|----------------|
| 16        | 16          | <b>723 510 105</b> | 10 | 0.028          | <b>723 510 130</b> | 10 | 0.027          |
| 20        | 16          | <b>723 510 106</b> | 10 | 0.046          | <b>723 510 131</b> | 10 | 0.044          |
| 25        | 16          | <b>723 510 107</b> | 10 | 0.063          | <b>723 510 132</b> | 10 | 0.072          |
| 32        | 16          | <b>723 510 108</b> | 10 | 0.090          | <b>723 510 133</b> | 10 | 0.098          |
| 40        | 16          | <b>723 510 109</b> | 10 | 0.158          | <b>723 510 134</b> | 10 | 0.167          |
| 50        | 16          | <b>723 510 110</b> | 5  | 0.214          | <b>723 510 135</b> | 2  | 0.098          |
| 63        | 16          | <b>723 510 111</b> | 5  | 0.360          | <b>723 510 136</b> | 10 | 0.362          |
| 75        | 10          | <b>723 510 112</b> | 2  | 0.650          | <b>723 510 137</b> | 2  | 0.670          |
| 90        | 10          | <b>723 510 313</b> | 2  | 0.994          | <b>723 510 338</b> | 2  | 1.008          |
| 110       | 10          | <b>723 510 114</b> | 1  | 1.509          | <b>723 510 139</b> | 1  | 1.523          |

| z1<br>(mm) | z2<br>(mm) | D<br>(mm) | L1<br>(mm) | L2<br>(mm) | G/Tr<br>(inch) |
|------------|------------|-----------|------------|------------|----------------|
| 3          | 8          | 35        | 19         | 24         | 3/4            |
| 3          | 9          | 43        | 21         | 26         | 1              |
| 3          | 9          | 53        | 24         | 29         | 1 1/4          |
| 3          | 9          | 60        | 27         | 33         | 1 1/2          |
| 3          | 10         | 74        | 32         | 39         | 2              |
| 3          | 10         | 83        | 33         | 46         | 2 1/4          |
| 3          | 10         | 103       | 40         | 58         | 2 3/4          |
| 3          | 18         | 135       | 47         | 62         | Tr108x5        |
| 5          | 18         | 158       | 56         | 69         | Tr128x5        |
| 5          | 11         | 188       | 66         | 72         | Tr154x6        |

The technical data are not binding. They neither constitute expressly warranted characteristics nor guaranteed properties nor a guaranteed durability. They are subject to modification. Our General Terms of Sale apply.

Georg Fischer Piping Systems Ltd, Postfach, CH-8201 Schaffhausen/Switzerland

Phone +41 -(0)52-631 1111

e-mail: [info.ps@georgfischer.com](mailto:info.ps@georgfischer.com)

Internet: <http://www.gfps.com>