

# Sensor box SRBC for quarter turn actuators

FESTO



## All-rounder with Ex protection

### Highlights

- Weather-tight housing for outdoor applications
- Many switch variants for virtually all applications
- Intrinsically safe to ATEX
- cCSAus Listed, General Purpose
- SIL 2 to IEC 61508
- Two cable inputs for common power supply for the sensor box and solenoid valve

The new sensor box SRBC is the reliable and cost-effective solution when it comes to electronic position sensing and optical position indication of automated process valves. The sturdy version with IP67 and NEMA 4/4X is ideal for use indoors and outdoors, even in aggressive or corrosive environments.

### Flexible: suitable for many functions

The many mechanical, inductive or magnetic switch variants make SRBC extremely flexible – and suitable for virtually any application. At the same time, the two cable inputs enable solenoid valves and other devices to be connected. The highly visible position indicator makes identifying the switching status very easy, even from a distance.

### Safe: explosion protection included

The range includes an intrinsically safe variant, certified to ATEX for Zone 1 and 21 for use in potentially explosive areas.

### Fast and simple: mounting and commissioning

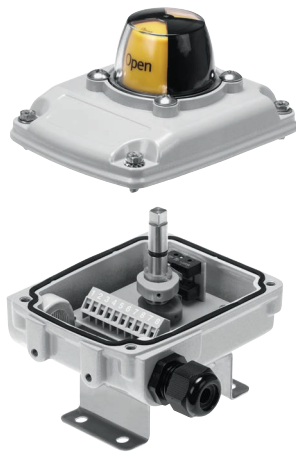
Thanks to the pre-assembled mounting bridges, the sensor box can be mounted quickly and easily on quarter turn actuators with port patterns to VDI/VDE 3845. The SRBC is not only quick to mount on a quarter turn actuator, it is also extremely easy to commission: the actuating cams can be set without any additional tools.

SIL certified  
according IEC 61508



# Sensor box SRBC for quarter turn actuators

Sophisticated technology for simple mounting and reliable, safe operation



SRBC is extremely versatile in use. The sturdy design of the sensor box SRBC is ideal for outdoor and indoor applications. The aluminium housing and the stainless steel mounting bridge, the high IP and NEMA protection class, the easy to configure actuating cams and the pre-assembled mounting bridge, as well as the versatile switch options make mounting quick and simple, and operation flexible and safe.

Highly flexible: many switch variants for different applications

Switch types	
Mechanical switches	3-wire SPDT, Omron SS-5
Inductive switches	<ul style="list-style-type: none"> <li>• 2-wire NAMUR, NC, Pepperl+Fuchs NCB2-V3-N0</li> <li>• 2-wire DC, NO, Pepperl+Fuchs NBB3-V3-Z4</li> <li>• 3-wire PNP, NO, Pepperl+Fuchs NBB2-V3-E2</li> <li>• 3-wire NPN, NO, Pepperl+Fuchs NBB2-V3-E0</li> </ul>
Magnetic switch	3-wire SPDT, Hamlin 59140

## General characteristics

Housing	Cast aluminium, epoxy-coated
Cable entry	2x M20x1.5
Optical position indicator	3D OPEN-CLOSE position indicator/ yellow-red
Mounting	Pre-assembled mounting bridge 80 x 30 x H 20 mm for interface VDI/VDE 3845 (NAMUR interface)
Electrical connection	10-pin terminal strip, cable connector and blanking plug included in the scope of delivery
Solenoid valve connection	Two cable inputs for common power supply of the sensor box and solenoid valve
Number of switches	2
Switch type	Mechanical, inductive, magnetic reed

## Material data

Housing	Cast aluminium, epoxy-coated
Shaft	Stainless steel
Screws	Stainless steel
Seals	NBR
Optical position indicator	PC
Cable connector	PA
Blanking plug	PA
Mounting bridge	Stainless steel

## Operating and environmental conditions

Housing protection class	IP67, NEMA 4/4x
cCSAus	Listed ordinary location
ATEX	II 2G c T6 X II 2D c 85 °C X
Safety integrity level [SIL] to IEC 61508	Up to SIL 2
Ambient temperature	-20 ... 80 °C (70 °C)

## Accessories

DARQ mounting bridges for quarter turn actuators with an interface to VDI/VDE 3845 (NAMUR interface)

### Technical details

Hole pattern length [mm]	Hole pattern width [mm]	Shaft height on the actuator [mm]
80	30	20
80	30	30
130	30	30

### NETC cable connectors for cable entry

M20x1.5 made of polymer or metal

