

Type 6206

2/2-way valve



Operating Instructions

We reserve the right to make technical changes without notice.

© Bürkert Werke GmbH & Co. KG 2020-2025

Technical documentation 2512/02_GBen_00815315_901690251_18014399522737931 / Original DE

Table of contents

1	About this document	4
1.1	Symbols	4
1.2	Terms and abbreviations	5
1.3	Manufacturer	5
2	Safety	6
2.1	Intended use	6
2.2	Basic safety instructions	6
3	Technical data	8
3.1	Standards and directives	8
3.2	Operating conditions	8
3.3	Fluidic data	8
3.4	Mechanical data	9
3.5	Electrical data	9
3.6	Type label (example)	10
4	Installation	11
4.1	Fluidic installation	11
4.2	Electrical installation	12
4.3	Rotating the solenoid	13
4.4	Insulation	14
5	Maintenance and troubleshooting	15
6	Disassembly	16
7	Logistics	17
7.1	Transport and storage	17
7.2	Return	17
7.3	Disposal	17

1 About this document

The document is an important part of the product and guides the user to safe installation and operation. The information and instructions in this document are binding for the use of the product.

- ▶ Before using the product for the first time, read and observe the whole safety chapter.
- ▶ Before starting any work on the product, read and observe the respective sections of the document.
- ▶ Keep the document available for reference and give it to the next user.
- ▶ Contact the Bürkert sales office for any questions.



Further information concerning the product at [Products](#).

- ▶ Enter the article number from the type label in the search bar.

The illustrations in these instructions may vary depending on the product variant.

1.1 Symbols



DANGER!

Warns of a danger that leads to death or serious injuries.



WARNING!

Warns of a danger that can lead to death or serious injuries.



CAUTION!

Warns of a danger that can lead to minor injuries.

NOTICE!

Warns of property damage on the product or the installation.



Indicates important additional information, tips and recommendations.



Refers to information in this document or in other documents.

- ▶ Indicates a step to be carried out.

✓ Indicates a result.

Menu Indicates a software user-interface text.

1.2 Terms and abbreviations

The terms and abbreviations are used in this document to refer to following definitions.

Device	2/2-way valve
bar	Unit for relative pressure

1.3 Manufacturer

Bürkert Fluid Control Systems

Christian-Bürkert-Str. 13–17

74653 Ingelfingen

GERMANY

The contact addresses are available at [Contact](#).



Need more information or additional products?

► Explore the full range of products on our [eShop](#).

2 Safety

2.1 Intended use

Improper use of the Type 6026 solenoid valve may be dangerous to people, nearby equipment and the environment.

The device is designed for blocking, dosing, filling and ventilating gaseous and liquid media.

- ▶ When using the device, observe the authorised data, and the operating and usage conditions specified in the contract documents and in the operating instructions.
- ▶ Prerequisites for safe and trouble-free operation are correct transport, storage and installation as well as careful operation and maintenance.
- ▶ Only use the device as intended.
- ▶ Check the media resistance.

2.2 Basic safety instructions

These safety instructions do not take into account any unforeseen circumstances or incidents which may arise during installation, operation and maintenance.

Risk of injury from high pressure.

- ▶ Before loosening lines or valves, switch off the pressure and drain the lines.

Risk of injury from electric shock.

- ▶ Before working on the device or system, switch off the power supply and secure against reactivation. Observe any applicable accident prevention and safety regulations for electrical devices.

Risk of burns or risk of fire.

Continuous operation or hot media may result in a hot device surface.

- ▶ Keep the device away from highly flammable substances and media and do not touch with bare hands.
- ▶ Do not obstruct heat dissipation required for operation.

Risk of injury due to cold, hot and aggressive media.

Heat sources or temperature fluctuations may cause malfunctions or leaks.

- ▶ Avoid heat sources which may cause the permissible temperature range to be exceeded.
- ▶ Check the media resistance before use.

Danger due to low and high temperatures.

Depending on the media temperature, the device can become extremely cold or extremely hot.

- ▶ Keep the device away from substances sensitive to cold and highly flammable substances and do not touch with bare hands.

Destruction of the solenoid due to overheating.

- ▶ Electrically connect solenoid with mounted body only.
- ▶ In the case of alternating voltage, pay attention to movable core.
- ▶ Check media resistance.

General hazardous situations.

To prevent injuries, observe the following:

- ▶ Do not feed in any aggressive or highly flammable media.
- ▶ Do not make any internal or external changes to the device.
- ▶ Secure the system and device against accidental activation.
- ▶ Installation and maintenance may only be performed by authorised technicians using the appropriate tools.
- ▶ After an interruption in the power or pneumatic supply, ensure that the process is restarted in a defined or controlled manner.
- ▶ Do not subject the body/housing to mechanical stress.
- ▶ Observe general engineering standards and rules.

3 Technical data

3.1 Standards and directives

This product complies with the legal requirements applicable at the time of placing on the market and has been developed and tested in accordance with the relevant European directives/regulations and harmonized standards. The conformity is documented and, if necessary, supported by evidence. The EU Declaration of Conformity can be found behind the respective type on the home page

country.burkert.com

3.2 Operating conditions

The following values are indicated on the type label:

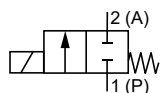
- Voltage, current type, solenoid power
- Pressure range
- Body material (MS = brass, VA = stainless steel)
- Seal material (PTFE, NBR)

Ambient temperature	max. +50 °C
Storage temperature	-20...+70 °C
Degree of protection with cable plug	IP65 acc. to EN 60529, NEMA 4X
Operating mode (acc. to DIN VDE 0580):	Continuous operation, intermittent operation
Minimum duty cycle:	1 s
Minimum power-off interval:	1 s
Switching frequency	max. 30/min

3.3 Fluidic data

Medium temperature	-200...+180 °C
Viscosity	21 mm ² /s
Media	neutral gaseous and liquid media that do not attack the body and seal materials (see resistance table). Check resistance in each individual case.

Circuit function



Circuit function A (CF A), NC
2/2-way solenoid valve, direct-acting
Normally closed

3.4 Mechanical data

Port connections	G $\frac{1}{4}$, G $\frac{1}{2}$, G $\frac{3}{8}$
Dimensions	See data sheet
Material	
Body	Brass body, valve seat 1.4305
Identification MS	Brass body, brass valve seat
Body	Body and valve seat 1.4410
Identification VA	
Actuator	Epoxide
Seal material	PTFE

3.5 Electrical data

Connections	DIN EN 175301-803 Form A: for Type 2508 cable plugs
Operating voltage	see type label
Voltage tolerance	$\pm 10\%$
Nominal power	8 W operation, 85 W inrush
Switching time:	approx. 500 ms

3.6 Type label (example)

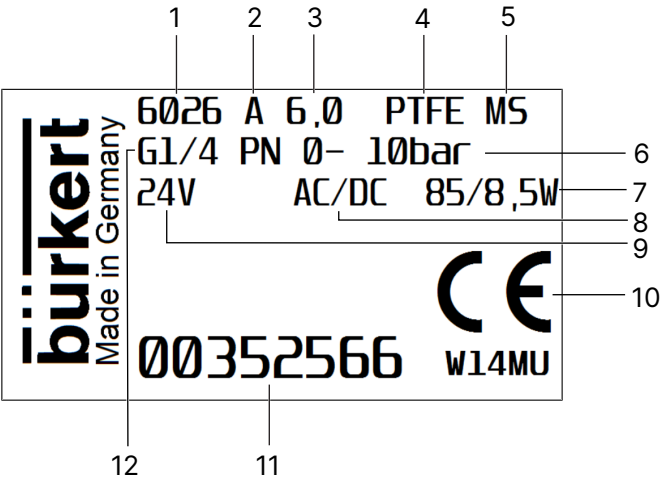


Fig. 1: Type label (example)

1 Type	2 Circuit function
3 Seat size	4 Sealing material
5 Body material	6 Pressure range
7 Power	8 Frequency
9 Voltage	10 CE marking
11 Article number	12 Connection

4 Installation

DANGER!

Risk of injury from high pressure in the system.

- ▶ Before loosening lines and valves, turn off the pressure and drain the lines.

DANGER!

Risk of injury from electric shock.

- ▶ Before reaching into the system, switch off the power supply and secure against reactivation.
- ▶ Observe any applicable accident prevention and safety regulations for electrical devices.

WARNING!

Risk of injury from improper installation.

- ▶ Installation may be carried out by authorised technicians only and with the appropriate tools.

WARNING!

Risk of injury due to unintentional activation of the system and uncontrolled restart.

- ▶ Secure the system against unintentional activation.
- ▶ Following installation, ensure a controlled restart.

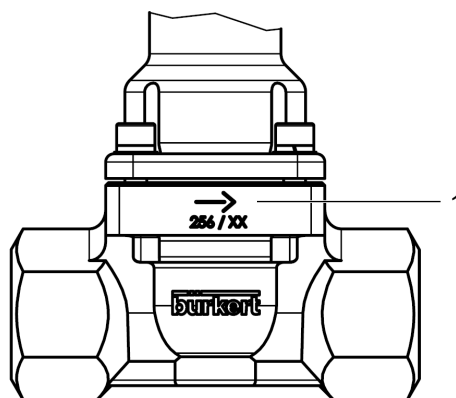
4.1 Fluidic installation

Installation position: any, preferably with solenoid or actuator facing upwards.

- ▶ Clean pipelines and flange connections.
- ▶ Install dirt trap at the valve inlet (0.2...0.4 mm).



Note the flow direction of the valve. The arrow on the body indicates the flow direction.



1 Arrow indicating flow direction

NOTICE!

Caution! Risk of breakage

- ▶ Do not use the solenoid or actuator as a lever arm.

Threaded connection

- ▶ Hold the valve body using a matching open-end wrench and screw into the pipeline.

4.2 Electrical installation

DANGER!

Risk of injury from electric shock

If there is no protective conductor function between the solenoid and the body, there is a risk of electric shock.

- ▶ Before reaching into the system, switch off the power supply and secure against reactivation.
- ▶ Observe any applicable accident prevention and safety regulations for electrical devices.
- ▶ Always connect the protective conductor.
- ▶ Check electrical continuity between solenoid and body.

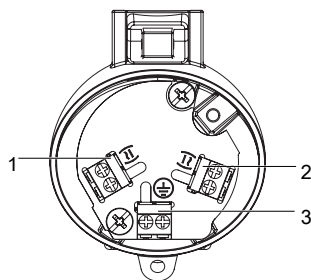
NOTICE!

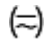
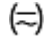

- ▶ Observe the voltage and current type according to the type label.

- ▶ Check that the seal is properly fitted.
- ▶ Screw cable plug tightly onto the solenoid (max. 1 Nm).

Only for variants with terminal box:

- Connect a maximum of one conductor per terminal point
- The maximum connection cable cross-section is 2.5 mm²/AWG 14
- Remove insulation on the wires to a maximum length of 6 mm
- Tighten the terminal screws with 0.25 Nm
- Close the housing lid properly and tighten the lock screw with 2 Nm
- Check the continuity of the protective earth connection.



Position	Icon	Pin assignment			
1		L	N	+	-
2		N	L	-	+
3		PE	PE	PE	PE

4.3 Rotating the solenoid

WARNING!

Risk of injury from electric shock

If there is no protective conductor function between the solenoid and the body, there is a risk of electric shock.


- ▶ Check the protective conductor function after installing the solenoid.

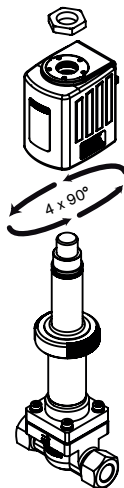
WARNING!

Risk of overheating and fire

Connecting the solenoid without a pre-installed valve will cause overheating and destroy the solenoid.

- ▶ Only connect the solenoid after the valve has been installed.

 The solenoid can be rotated by 4 x 90°.



- ▶ Loosen the nut.
- ▶ Rotate the solenoid.
- ▶ Use a matching open-end wrench to tighten the nut (max. 5 Nm).

Fig. 2: Rotating the solenoid

4.4 Insulation

The device must not be insulated more than 2 cm from the body edge upwards to the actuator.

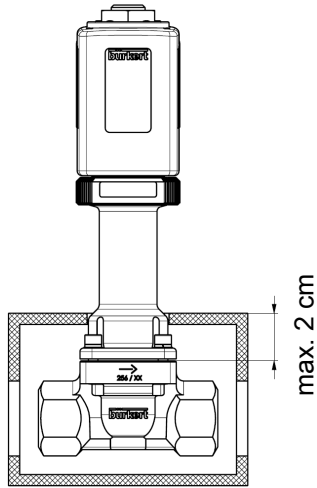


Fig. 3: Insulation

5 Maintenance and troubleshooting



WARNING!

Risk of injury due to improper maintenance work.

- ▶ Maintenance may be carried out by authorised technicians only and with the appropriate tools.



WARNING!

Risk of injury due to unintentional activation of the system and uncontrolled restart.

- ▶ Secure the system against unintentional activation.
- ▶ Ensure a controlled restart after maintenance is completed.

Check in case of faults:

- Port connections
- Operating pressure
- Operating voltage

If the valve still does not switch, contact your local Bürkert Service representative.

6 Disassembly



DANGER!

Risk of injury from high pressure in the system.

- ▶ Before loosening lines and valves, turn off the pressure and drain the lines.



DANGER!

Risk of injury from electric shock.

- ▶ Before reaching into the system, switch off the power supply and secure against reactivation.
- ▶ Observe any applicable accident prevention and safety regulations for electrical devices.



WARNING!

Risk of injury due to improper disassembly.

- ▶ Disassembly may be carried out by authorised technicians only using the appropriate tools.
- ▶ Switch off pressure and drain lines.
- ▶ Switch off electrical voltage.
- ▶ Remove the cable plug.
- ▶ Hold the valve firm using a matching open-end wrench and unscrew from the pipeline.

7 Logistics

7.1 Transport and storage

- ▶ Protect the device against moisture and dirt in the original packaging during transportation and storage.
- ▶ Avoid UV radiation and direct sunlight.
- ▶ Protect connections, if present, from damage with protective caps.
- ▶ Observe the permitted storage temperature.

7.2 Return



No work or tests will be carried out on the device until a valid Contamination Declaration has been received.

- ▶ To return a used device to Bürkert, contact the Bürkert sales office. A return number is required.

7.3 Disposal

Environmentally friendly disposal



- ▶ Follow national regulations regarding disposal and the environment.
- ▶ Collect electrical and electronic devices separately and dispose of them as special waste.

Further information at country.burkert.com