



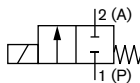
2/2-way solenoid valve for railway applications

- Direct acting and separated medium
- Integrated reduction of power
- With service friendly manual override
- Normally closed (NC) and normally open function
- KTW and W270 certified for drinking water

The direct-acting valve is delivered with circuit function, normally closed. The solenoid actuator is separated from the medium by a double PTFE seal with a small ventilated space. The valve is used for shut-off, dosing, filling and ventilating medium where low pressures are applicable; also suitable for use in technical vacuum.

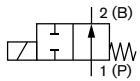
Circuit function A (CFA)

2/2 way direct-acting solenoid valve, normally closed



Circuit function B (CFB)

2/2 way direct-acting solenoid valve, normally open



Technical data	
Body material	Brass
Seal material	EPDM
Medium	Neutral liquids e.g drinking water or neutral gases e.g compressed air
Medium temperature	-30...+ 80 °C
Ambient temperature	-30...+70 °C
Viscosity	100...21 mm ² /s
Operating voltages	24 V UC ¹ (36 V UC on request) 110 V UC 230 V UC
Voltage tolerance	±30 %
Cycling rate	Max. 6/min with UC
Duty cycle	ED 100 %
Electrical connection	Cable plug (supplied as standard)
Protection class	IP65 with cable plug
Coil insulation class	H
Installation	As required, preferably with actuator upright
Max. system pressure in flow direction	8 bar (switching pressure max. 3 bar)
Response times [ms]	Measured at valve outlet at 6 bar and +20 °C.
Opening	Pressure relief 0 90 %
Closing	Pressure relief 100 to 10 %

¹ UC - Universal Current, AC and DC possible.

Flow rate: Kv value water [m³/h]

Measured at +20 °C, 1 bar pressure at valve inlet and free outlet.

Pressure values [bar]

Measured as overpressure to the atmospheric pressure

Technical data (cont.)

Orifice [mm]	K _v value water [m ³ /h]	Port connection	Pressure range [bar]		Electrical	power consumption		Response times (ms)		Weight [kg]
			CFA	CFB		Inrush	[VA]	Opening	Closed	
10	2.0	G 3/8	0...3	0...2	UC	100 VA 100 W	9 W (after 500 ms)	10...20	40...60	1.4
15	4.5	G 1/2	0...1	0...1						
20	6.0	G 3/4	0...0.5	0...0.5						

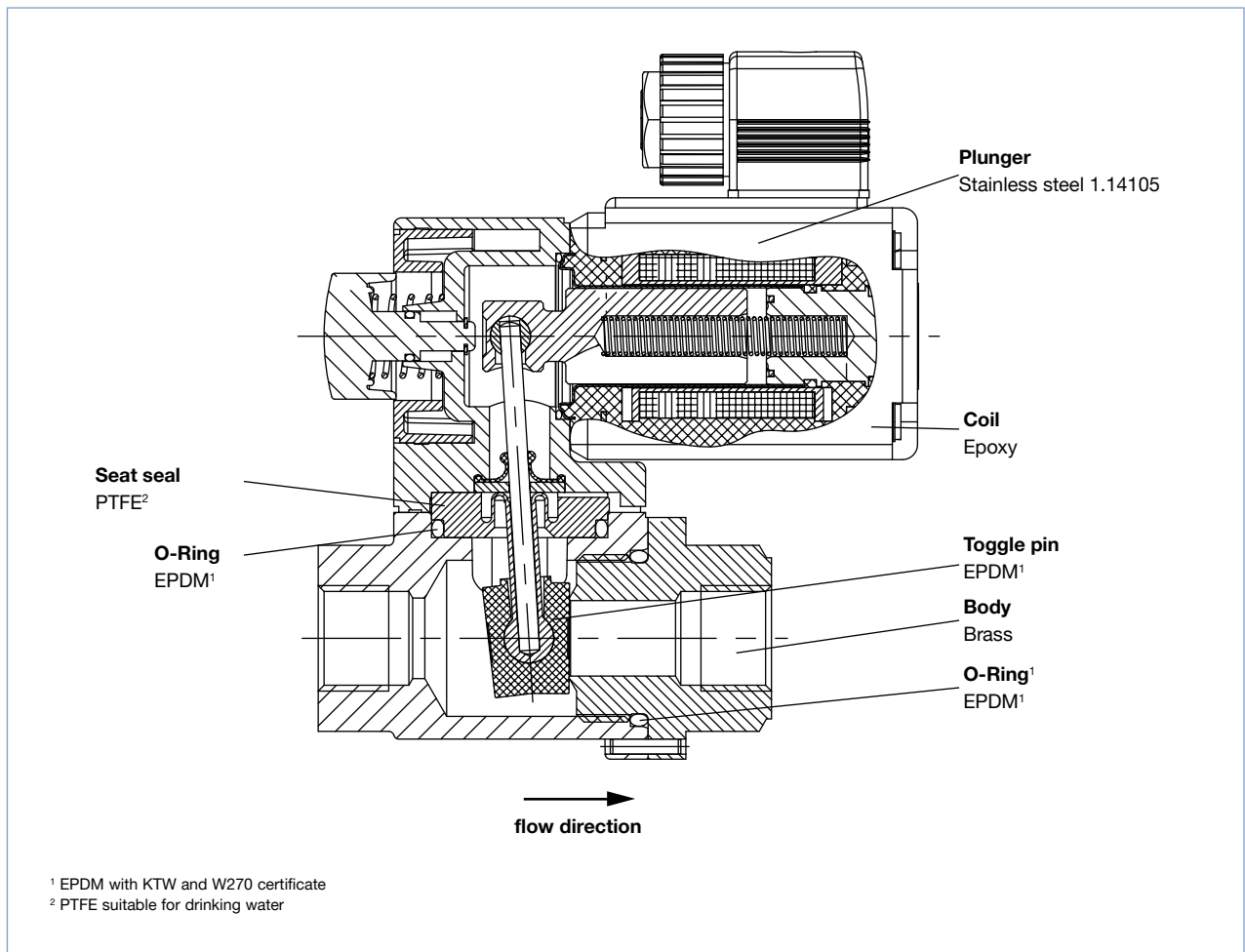
Power input at 30 % raised operating voltage

31.2 V 7.60 A

143.0 V 1.80 A

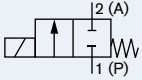









299.0 V 0.76 A

Materials




Ordering chart for valves (other versions on request)

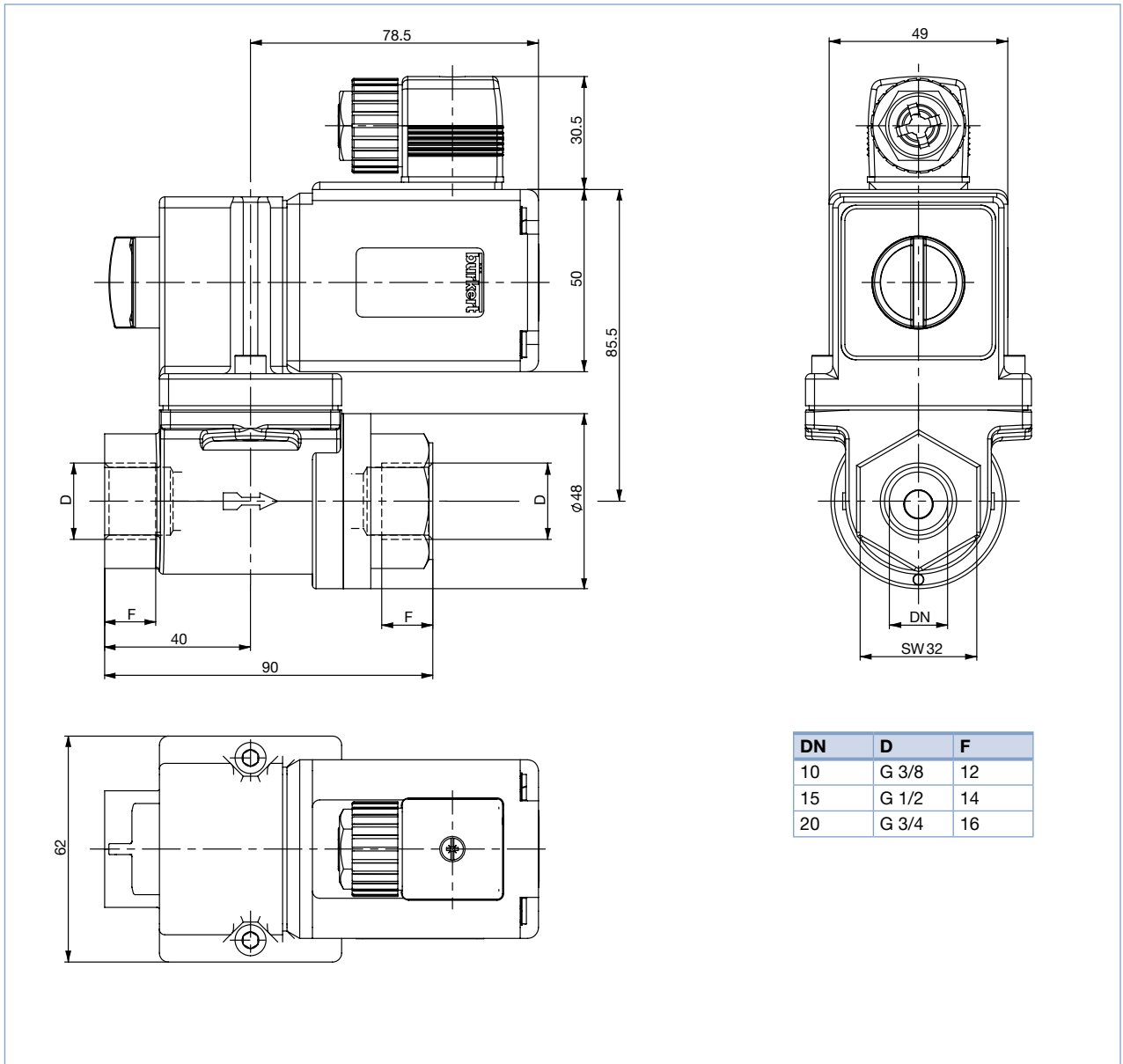
All valves with manual override, brass body, and cable plug

Circuit function	Orifice [mm]	Port connection	K _v value water [m ³ /h]	Pressure range [bar]	Voltage/Frequency [V/Hz]	Item no.
	10	G 3/8	2.0	0...3	24/UC	246791 
					110/UC	246792 
					230/UC	246793 
	15	G 1/2	4.5	0...1	24/UC	246789 
					110/UC	242884 
					230/UC	246790 
	20	G 3/4	6.0	0...0.5	24/UC	239361 
					110/UC	239348 
					230/UC	246787 

Further versions on request

 **Electrical connection**
with electrical position feedback

Dimensions [mm]



To find your nearest Bürkert facility, click on the orange box →

www.burkert.com

In case of special application conditions,
please consult for advice.

Subject to alterations
© Christian Bürkert GmbH & Co. KG

1712/1_EU-en_00895329